

OmniTouch™ 8118/8128 WLAN Handset



User guide

8AL90827AAAAed01

Your telephone

Access MENU

Menu



'Menu' key is used to access various functions of the set (programming, operation, etc.)



'OK' key to access the set local configuration (ringing, contrast, etc.), apply your choice.

Status icons



Battery charge level



Radio reception quality



Programmed call-back time



Lock / unlock your telephone



Notification



Call diversion activated



Handfree mode activated



New voice or text message, call back request, missed calls



Silent mode activated



Headset connected

Adjust audio volume (short press)

Activate/deactivate loudspeaker (during a conversation) - Long press - OmniTouch 8128 WLAN Handset

Mute key so that your correspondent can no longer hear you (long press)

Push To Talk (OmniTouch 8128 WLAN Handset - OmniPCX Enterprise)

Display key.

Used to access various functions according to the status of the telephone (communication, text entry, idle,...). Example:

LNR



To access the 'Redial' function

OK



Apply your choice

More



To access more options

C



To correct a character entered

Back



To end a configuration or to go back to the previous page or to the idle screen

Take the call

Switching between calls (Broker call) - single-line terminal

To lock the keypad (long press)

Profile button

This key allows you to select a profile (volume, ring tones, vibration, key sound) or to create a new profile.

Back-lit screen

The screen switches off automatically after a few seconds. The display is in color for the OmniTouch 8128 WLAN Handset. The screen switches on automatically as soon as you press any key.

Headset socket

Customizing the telephone:



'OK' key to access the set local configuration (ringing, contrast, etc.)

apply



Used to validate your choices and options while programming or configuring

Navigate



Navigation keys: used to navigate the menus or in a text field when entering characters.

Switch on / off (long press)

Hang up

- Return to first screen
- Switch off ringer

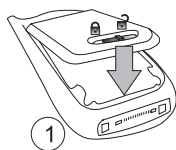
Company directory (long press)

OmniTouch 8128 WLAN Handset

Microphone

Installing the battery in the telephone

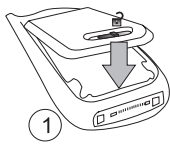
- Installing the battery in the telephone



Before inserting the battery module into the phone, make sure that its lock is in the unlocked position

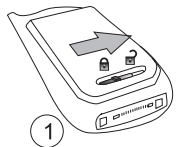


While maintaining the battery module in position, slip the lock to the locked position

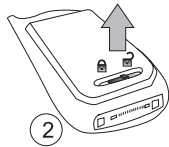


Check that the battery module is properly installed in its housing

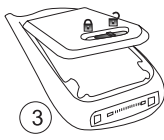
- To remove it



Slip the lock to the unlocked position



Lift the battery module



You can then remove the battery module

Charging your telephone battery



It is important to fully charge your phone before using it for the first time.



Connect the charger and place the telephone in the charging holder. The phone LED is orange when charging

Take the phone out of the charger
Once the phone is charged (steady green), you can take the phone out of the charger. To remove the phone from the charger, you must first tilt it forward and then take it out of the charger.



The battery charge time is 2.5 hrs.

The indicator LED on the set gives the following indications:

None	Switched off
Green, steady	Handset fully charged and in charger
Green, flashing	Switched on, and not in charger
Orange, steady	Charging
Orange, flashing	Low battery
Red, flashing	Very low battery

Switching on your telephone



Switch on
(long press)



Wait a few seconds
(about 3s).



Your telephone is
switched on

If the display fails to light or the red LED is flashing, recharge the battery

If the red LED is flashing slowly:

- Check that you're in a WIFI hotspot
- Check that the telephone is properly installed in the system (consult the PABX manager).

Switch off your phone



Long press on the on/off-hook key until the confirmation popup appears.



To confirm.

Access MENU

Menu



It provides access to all the functions available on your system.

■ **Set idle:**

- Configure the set (personal assistant, voice mail, language, etc.)
- Call back one of the last numbers dialled
- Programming an appointment reminder
- Lock / unlock your telephone
- Consult or send text or voice messages
- Divert your calls to another number. (immediate forwarding, forward to voice mail, forward to bleeper)
- Pick-up a call to a set, a general call or retrieve a parked call
- Call or modify a number in the personal phone book

■ **During a conversation**

- Make a second call
- Placing a call on hold (hold)
- Sending DTMF signals
- Recording the current conversation
- Parking an external communication

Other features can be accessed depending on the configuration of the system.

Making a call



OR



OR



Dial directly the number for your call

Number required

Long press (Handfree)

Number required



Only the OmniTouch 8128 WLAN Handset allows the handsfree mode.



To make an external call, dial the outside line access code before dialling your correspondent's number. 9 is the default code for an outside line.



For the operator, dial '0' (by default).

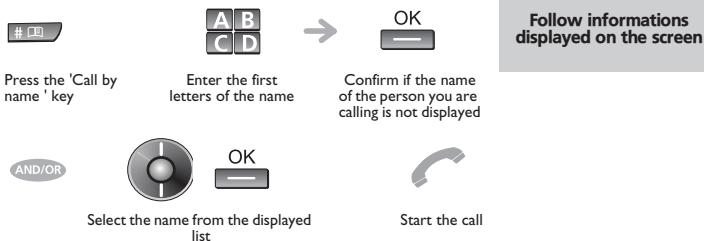
Receiving a call



Calling from your personal directory (PersSpDial)



Calling your correspondent by name (company directory)



call back one of the last numbers dialled



During a conversation

Making a second call during a conversation

During a conversation



The first call is on hold

Calling a second person during a conversation



You can also initiate a second call by selecting the function associated with the second call after pressing the 'Menu' key (enquiry call).

Answering a second call during a conversation

- You are in conversation and a correspondent is trying to contact you:

The name or number of the caller is displayed for a few seconds



The first call is on hold

Answer the second call



Over 3 seconds, move with the navigate-left-right key to the receiving a second call icon, to see the identity of the second caller (and off-hook if necessary).

Switching between calls (Broker call)

- During a call, to recover the correspondent on hold:



OK



OR



Retrieve the correspondent on hold

Switching between calls (Broker call)
- single-line terminal only

- To cancel your second call and recover the first:



Your telephone rings



Hang up the ongoing call

Recover the correspondent on hold

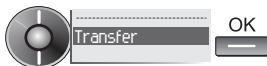
Transferring a call

- Transfer call to another terminal

You are in conversation with the destination number



Menu



Select the 'transfer' function Select 'transfer'



You can also transfer your call immediately, without waiting for your correspondent to answer.

Three-way conference with internal and/or external correspondents (conference)

- During a conversation, a second call is on hold.

Menu



Conference

OK



You are in conference mode

select the 'conference' function

Diverting calls to another number (immediate diversion)

Menu



Forward

OK



Display the forwarding status (active/inactive)

Select the 'Diversion' function

Menu



OK

2 3
5 6



diversion is acknowledged

Back

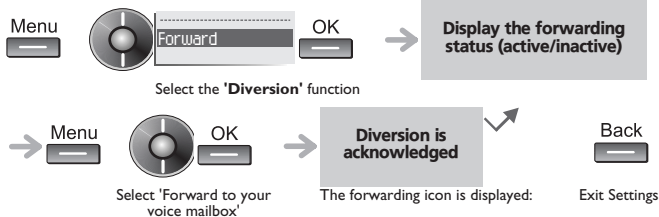
Select the function associated with 'Immediate forwarding'

Number to be called

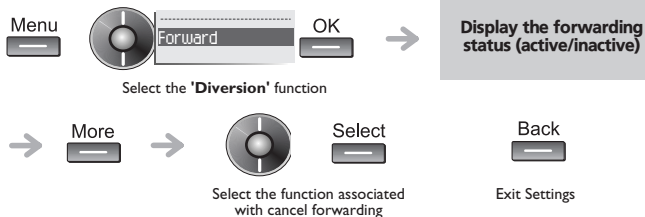
The forwarding icon is displayed:

Exit Settings

Diverting your calls to your voice message service



Cancelling all diversions



The Push-To-Talk (PTT) function can be described as a group/conference call to a predefined group of members.

The 'Push-to-talk' function, activated by the system administrator can be configured by the user via the set local menu (OK key, 'Push-to-Talk' function).

Push To Talk (PTT) Group call

The calls are made in half-duplex communication using the Push To Talk button as a momentary switch button. While one user talks (and the PTT button is pressed) the others can listen. The microphone is active when the PTT button is pressed down and on mute when the PTT button is released.

- **Start a PTT group call**



Press the PTT button



Keep the PTT button pressed

Once a member tries to call the other members of the PTT Group by pressing the PTT button, the others receive an invitation to participate on their phone. The user can also send a message (as text message) to invite others to join the discussion.

PTT invitation received as incoming call

- **Accept or reject the PTT invitation**

PTT invitation received as incoming call



Accept



OR

Reject



Depending on the configuration, the handset may accept the invitation automatically.

- **Close the PTT invitation**

Once invitation accepted



Close



- Rejoin a PTT group from an incoming call invitation



Select the PTT group

PTT invitation received as message

- Accept or reject the PTT invitation

PTT invitation received as incoming call



Depending on the configuration, the handset may accept the invitation automatically



If the user declines the PTT invitation, they can rejoin the PTT Group later on.

- Close the PTT invitation

Once invitation accepted



- Rejoin a PTT group from an invitation message



Select the invitation message

Declaration of compliance

Independently of the legal warranty that covers this appliance, it is guaranteed for 1 year, parts and labour, counting from the date indicated on your invoice.

The invoice will be demanded if making a claim under the warranty. The warranty does not however apply in the following cases: in the event of use that does not comply with the instructions given in this user's manual, faults or damage caused by natural wear, damage resulting from a cause external to the appliance (e.g. impact, fall, exposure to dampness, etc.), noncompliant installation or modifications or repairs carried out by people who are not approved by the manufacturer or retailer.

Warning: never place your telephone in contact with water. To clean your telephone, you may however use a damp soft cloth. Never use solvents (trichlorethylene, acetone, etc.) which may damage the plastic parts of your telephone. Never spray it with cleaning products.

The ear piece and microphone area of the handset may attract metallic objects that may be dangerous for the ear.

The wording is not contractual and may be subject to change. Some functions of your telephone are controlled by a software key and the configuration of the unit.

Declaration of compliance

EC countries: we, **Alcatel-Lucent Enterprise**, declare that the Alcatel-Lucent OmniTouch 8118/8128 WLAN Handset products comply with the essential demands of Directive 1999/5/CE of the European Parliament and Council. A copy of the original of this declaration of compliance can be obtained from your installer.



Information relative to the environment

This symbol indicates that at the end of its life, this product should be subject to special collection and disposal in member countries of the European Union, as well as in Norway and Switzerland. By ensuring this product is disposed of correctly, you will help to conserve natural resources and help prevent potential negative consequences to the environment and human health which could otherwise be caused by inappropriate disposal of this product. For further details about recycling this product, please contact the supplier who sold you the product.

Alcatel-Lucent Enterprise, in keeping with its policy of constant product improvement for the customer, reserves the right to modify product specifications without prior notice.

Alcatel, Lucent, Alcatel-Lucent and the Alcatel-Lucent logo are trademarks of Alcatel-Lucent. All other trademarks are the property of their respective owners.

The information presented is subject to change without notice.

Alcatel-Lucent assumes no responsibility for inaccuracies contained herein.

Copyright © 2010 Alcatel-Lucent. All rights reserved.